

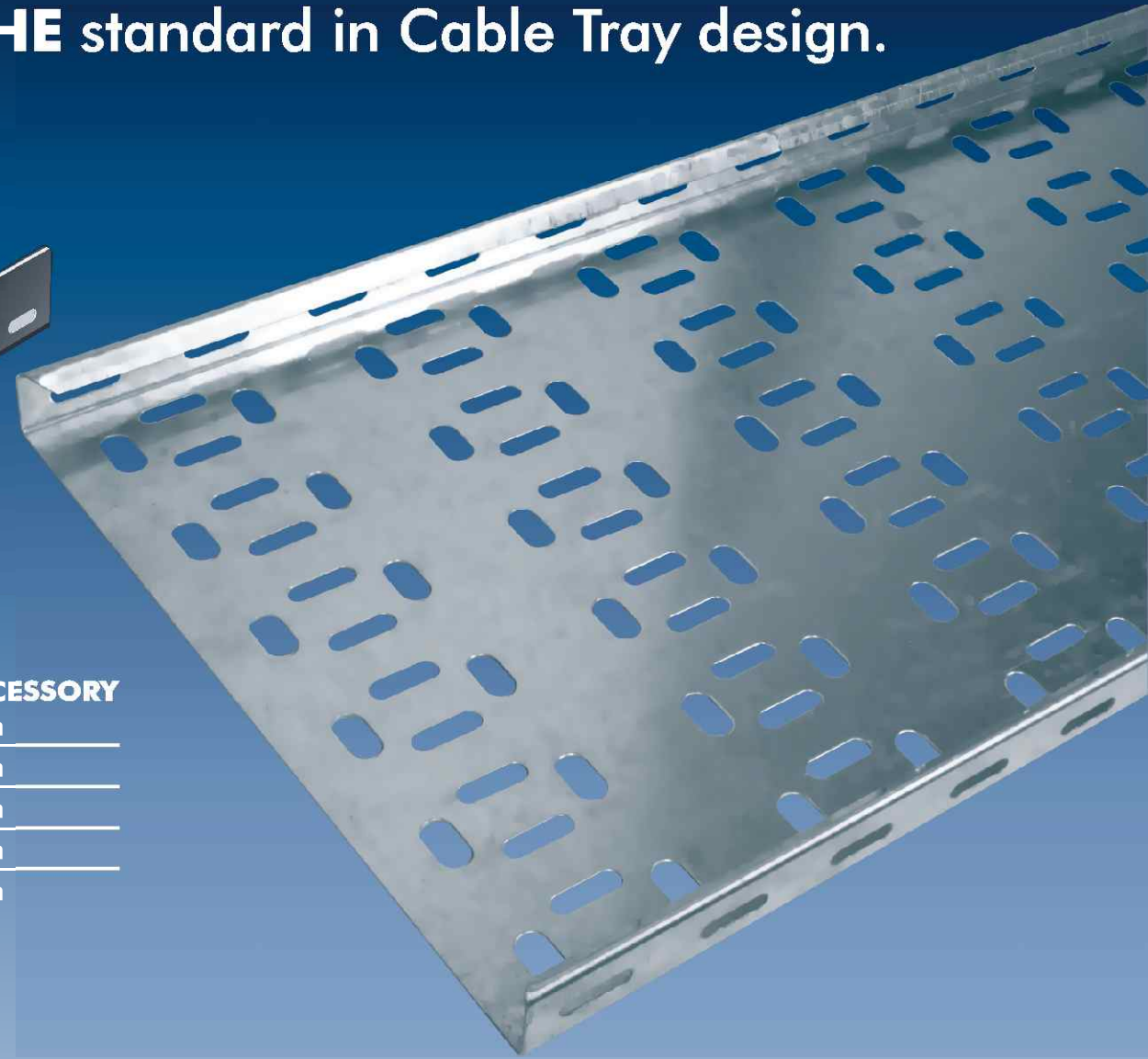
# **CABLE TRAY** Return Flange **LIGHTER, STRONGER, CHEAPER!**

Return Flange Cable Tray is accepted worldwide as **THE** standard in Cable Tray design.

**MEDIUM DUTY**



**HEAVY DUTY**

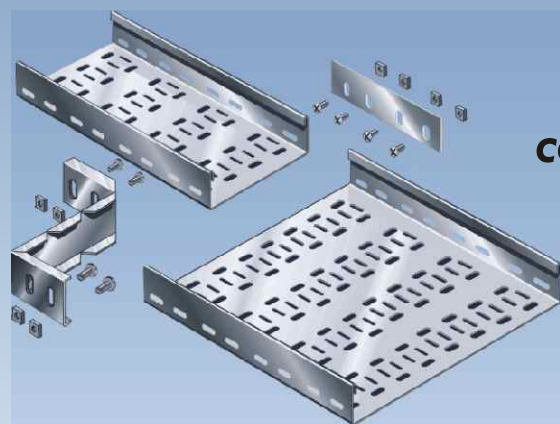


**Length - Straight Tray:** 3000 mm  
**Widths:** 50\* 75 100 150 225 300 450 600 750 900  
 \* 50 mm wide only available in RFMD  
**Slot Dimensions:** Slot - 25 x 7,5 mm for longitudinal  
 and 20 x 11 mm for lateral slots  
**Standard finish:** Galvanised (PG)  
**Special finishes available on request**

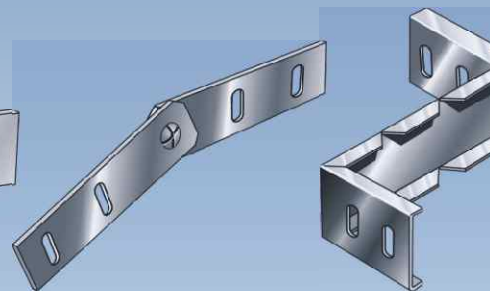
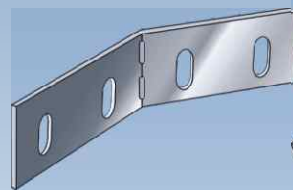
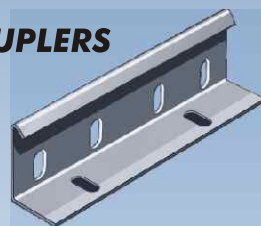
**Material Thicknesses:**

WIDTH	STRAIGHT TRAY	STANDARD ACCESSORY
50 - 225 mm	1,0 mm	1,0 mm
300 mm	1,2 mm	1,2 mm
450 mm	1,5 mm	1,2 mm
600 mm	1,5 mm	1,2 mm
750 & 900 mm	1,5 mm	1,5 mm

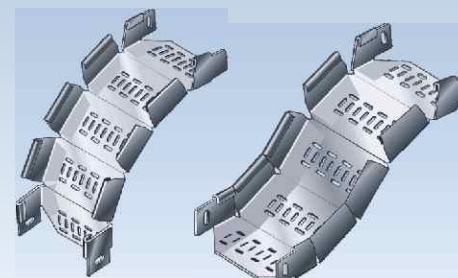
## **STANDARD ACCESSORIES WITH INTEGRAL COUPLERS**



**COUPLERS**



**COVERS**



**DIVIDERS**



**FIRST  
TECH**

INVESTING IN EXCELLENCE

Tel: (021) 531-1887